

3. Social Profile

Health, Nutrition and Sanitation

Health

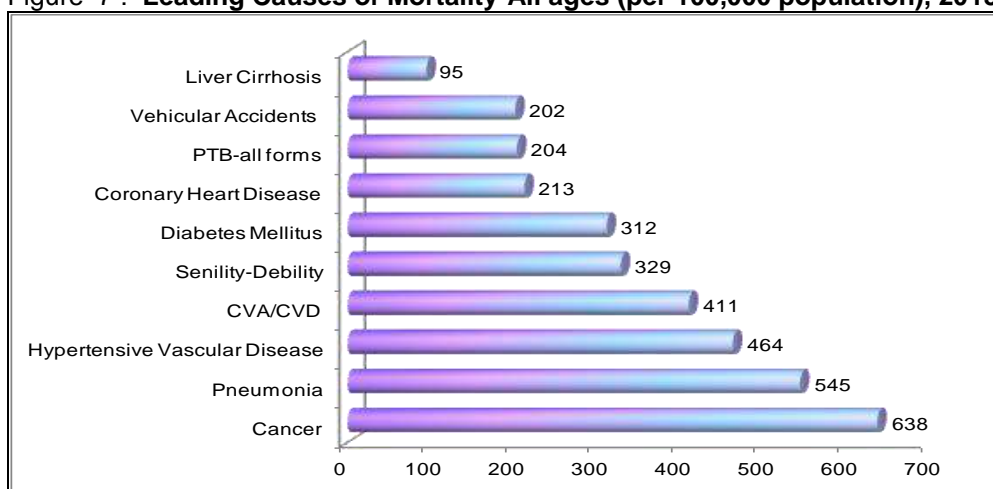
Natality 2015

Crude Birth Rate (CBR) is 28.98 live births per 1000 population.

Mortality 2015

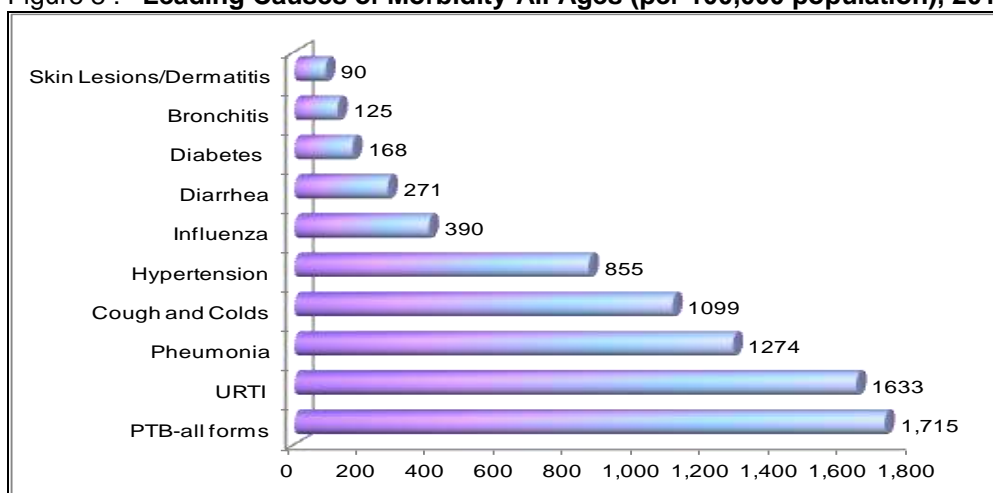
Crude Death Rate (CDR) is 8.37 deaths per 1000 population

Figure 7 : **Leading Causes of Mortality-All ages (per 100,000 population), 2015**



Source : City Health Office

Figure 8 : **Leading Causes of Morbidity-All Ages (per 100,000 population), 2015**

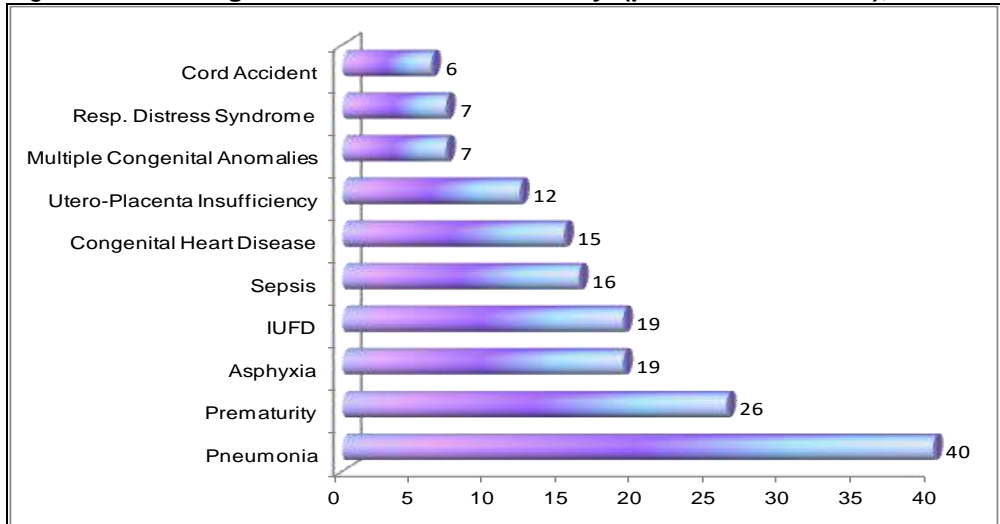


Source : City Health Office

Infant Mortality

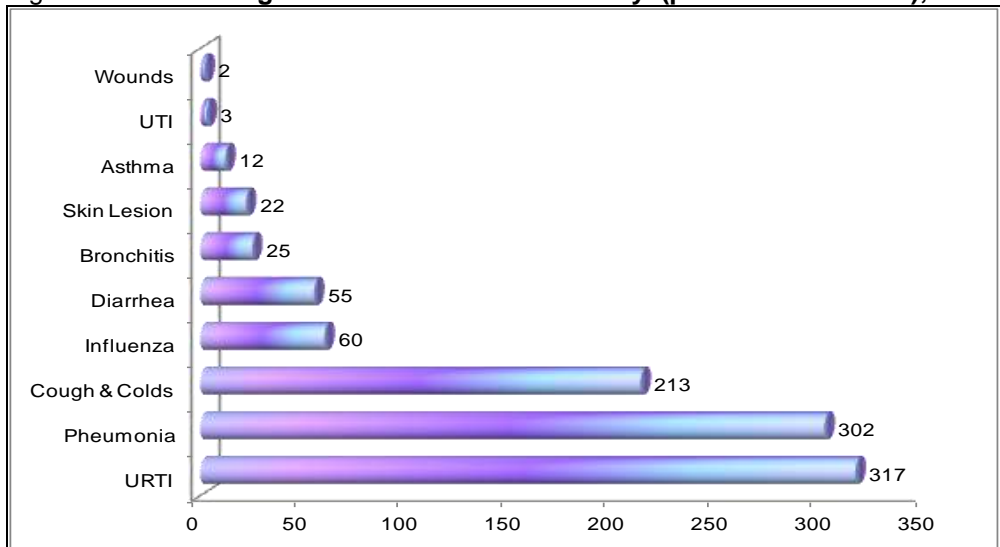
- Infant mortality rates for two consecutive years were 10.90 (2014) and 14.01 (2015) deaths per 1000 live births. It shows a slight decrease of deaths among infants. There are about 14 babies that die after delivery or before reaching their first year in 2015.

Figure 9 : **Leading Causes of Infant Mortality (per 1000 live births), 2015**



Source : City Health Office

Figure 10 : **Leading Causes of Infant Morbidity (per 1000 live births), 2015**



Source : City Health Office

Maternal Mortality

- Maternal mortality for the last two consecutive years were 1.04 in 2014 and 1.05 in 2015 for every 1000 live births due to pregnancy and child birth. This includes maternal deaths of persons coming from outside Cagayan de Oro.

Nutrition

Operation Timbang

- In 2015 Operation Timbang, the Barangay Nutrition Scholars (BNS) were able to reach out to 93,407 pre-school children age 0 to 71 months. Prevalence rate of underweight children is 3.64

Table 14 : **Operation Timbang , 2015**

Age Group	Total by Age Group							
	Total Normal		Total UnderW		Total Severely UnderW		Total OW	
	No	Prev	No	Prev	No	Prev	No	Prev
0-5 mos.	7,578	93.4%	100	1.3%	40	0.5%	148	1.9%
6-11 mos.	8,351	96.9%	152	1.8%	60	0.7%	55	0.6%
12-23 mos.	14,287	95.9%	386	2.6%	144	1.0%	88	0.6%
24-35 mos.	14,852	95.8%	451	2.9%	132	0.9%	72	0.5%
36-47 mos.	13,695	95.0%	497	3.4%	162	1.1%	56	0.4%
48-59 mos.	15,036	95.4 %	517	3.3%	145	0.9%	62	0.4%
60-71 mos.	15,659	95.8%	500	3.1%	113	0.7%	69	0.4%
Total 0-59 mos.	73,799	95.76%	2,103	2.73%	683	0.89%	481	0.62%
0-71 mos.	89,458	95.77%	2,603	2.79%	796	0.85%	550	0.59%

Source : City Health Office/Nutrition Planning Research and Monitoring

Water and Sanitation

Table 15 : **Status of Water Supply, 2015**

Source of Water	Household Number	Percentage of HHs Served
Level I	600	0.44
Level II	7,256	5.26
Level III	129,512	93.95
Doubtful Source	480	0.35
Total	137,848	100

Source : City Health Office (for verification)

Table 16 : **Status of Toilet Facilities, 2015**

Type of Toilet	Household Number	Percentage of Households
Household with Sanitary Toilets	129,129	93.67
Household with Unsanitary Toilets	4,433	3.22
Household without Toilets	4,286	3.11

Source : City Health Office (for verification)

Health Resources and Facilities

Table 17 : **Major Health Resources, 2015**

Health Resources	Number	Total
Manpower:		
Physicians		1,034
Government	293	
Private	741	
Nurses		1,689
Government	645	
Private	1,044	
Midwives		160
Government	87	
Private	73	
Volunteer Workers		
BNS's	150	150
BHW's	510	510
Others		1,442

Facilities:		
Hospital		12
Government	3	
Private	9	
Hospital Beds		1,898
Government	891	
Private	1,098	
Barangay health Center	55	55

Source: *Private and Public Hospitals – City Health Office*

Table 18 : Hospital By Category, Bed Capacity and Personnel, 2015

Hospitals	Category	No. of Beds	# of Rooms	Phy-sicians	Nurses	Mid-wives	Others
CDO Polymedic Medical Plaza	Tertiary	209	128	7	190	0	45
CDO Polymedic Medical General Hospital	Tertiary	43	24	4	80	0	61
Capitol University Medical City	Tertiary	148	148	172	178	18	31
Cagayan de Oro Maternity Children's Hospital & Puericulture	Level 1	60	26	38	35	5	31
Cagayan de Oro Medical Center	Tertiary	121	98	158	107	32	111
Camp Evangelista Station Hospital	Secondary	112	20	19	28	11	46
Doctor's Sabal Hospital	Primary	138	70	40	63	2	96
J.R. Borja Memorial City Hospital	Secondary	214	36	59	154	13	203
Northern Mindanao Medical Center	Tertiary	565	61	215	463	63	318
Madonna and Child Hospital	Tertiary	105	0	53	132	11	97
Maria Reyna Hospital	Tertiary	239	108	243	226	4	108
Puerto Community Hospital	Secondary	35	19	26	33	1	26
Total		1,989	738	1,034	1,689	160	1,442

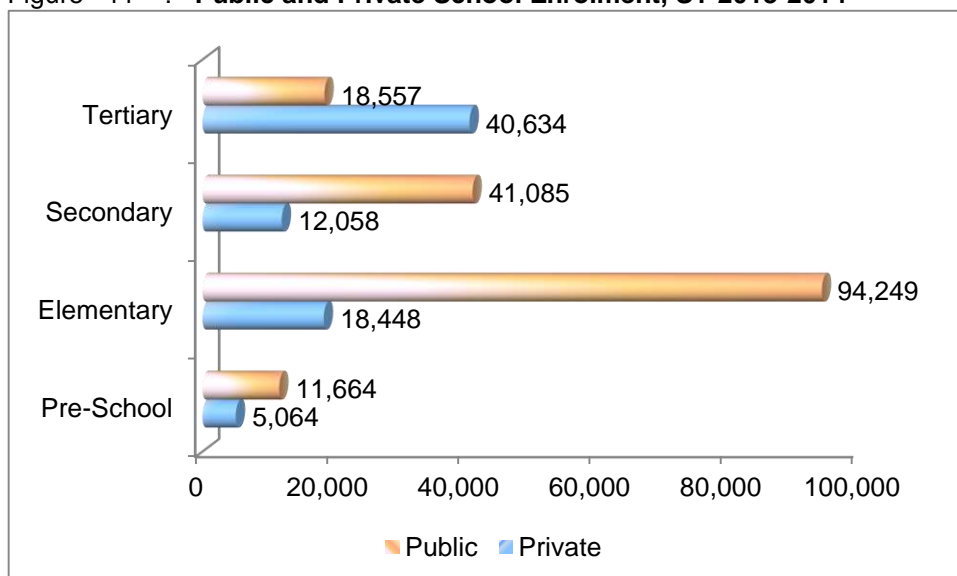
Source: *Private & Public Hospitals*

Education

Enrolment SY 2014-2015

- Total student population was 126,769
- Total no. of classrooms 1,560 public elementary and 1,391 in public secondary school
- Total no. of teachers 2,208 public elementary while only 1,232 in secondary school
- The bulk of enrolment mostly absorbed in elementary

Figure 11 : **Public and Private School Enrolment, SY 2013-2014**



Source : Dep-Ed–City School Division and on Higher Education (CHED)

Participation Rate in public elementary and secondary level;

- Elementary level participation rate : 108.38% SY 2012-2013 and 108.95% SY 2013-2014
- Secondary level participation rate : 60.51% SY 2012-2013 and 61.32% SY 2013-2014

Cohort Survival Rate (CSR) in the elementary level SY 2013-2014 is 87.79%, which signifies that 88 students enrolled in Grade. While the CSR in the secondary level has increased to 83.50% which indicates that about 84 students enrolled in first year were able to finish high school.

Drop-out Rates

- Increased from 0.23% SY 2011-2012 to 0.73% SY 2012-2013 in the elementary level.
- While the secondary level has slightly decreased from 4.38% SY 2011-2012 to 3.75% SY 2013-2014.

Completion Rate in SY 2013-2014 elementary level is 84.71% and 79.17% for secondary level.

Table 19 : **Comparative Performance Indicator, SY 2014-2015**

Indicator	SY 2013-2014	SY 2014-2015	Percentage of Increase/ Decrease
1. School-age Population			
Preschool (3-5)	44,750		5.45
Elementary (6-12)	98,727		5.44
Secondary (13-16)	57,537		5.44
Tertiary (17-21)	77,454		5.45
2. Enrolment			
Public:			
Preschool	11,664		88.49
Elementary	94,249		19.53
Secondary	41,085		(17.39)
Tertiary	18,557		387.67
Private:			
Preschool	5,064		
Elementary	17,550		
Secondary	11,263		
Tertiary	40,634		
Total:			
Preschool	16,728		(11.44)
Elementary	112,697		3.03
Secondary	53,143		(36.66)
Tertiary	59,191		
3. Participation Rate			
Public Elementary	-		
Public Secondary	-		
4. Survival Rate			
Public Elementary	87.79		13.10
Public Secondary	-		

Indicator	SY 2013-2014	SY 2014-2015	Percentage of Increase/ Decrease
5. Repetition Rate			
Public Elementary	0.81		(28.32)
Public Secondary	3.24		(96.37)
6. Completion Rate			
Public Elementary	84.71		12.56
Public Secondary	-		-
7. Drop-out Rate			
Public Elementary	-		-
Public Secondary	-		-

Source : Department of Education – City School Division and Commission on Higher Education (CHED)

Table 20 : Facilities and Human Resources, 2014-2015

Indicator	2013-2014	Percentage of Increase/ Decrease
1. Number of Schools		
Public:		
Pre-School		0
Elementary	70	(5.13)
Secondary	40	
Tertiary	-	-
Private:		
Pre-School	111	-
Elementary	111	-
Secondary	52	-
Tertiary	16	0
2. Classrooms		
Public:		
Elementary	1,560	14.12
Secondary	1,391	0.83
Private:		
Elementary	-	
Secondary	508	
3. Teachers		
Public:		
Elementary	2,208	21.85
Secondary	1,244	11.70
Private:		
Elementary	-	
Secondary	701	

Indicator	2013-2014	Percentage of Increase/ Decrease
4. Classroom– Student Ratio Public Elementary Public Secondary	1:60 1:54	
5. Teacher– Student Ratio Public Elementary Public Secondary	1:42 1:26	
6. Boys – Girls Ratio Public Elementary Private Elementary Public Secondary Private Secondary		

Source: Department of Education-City School Division and Commission on Higher Education (CHED)

Social Welfare

The City Government, thru the City Social Welfare and Development Office and Non-Government Organizations (NGOs) are committed to work collectively in pursuing programs/activities to alleviate the socio-economic situation of the disadvantaged population.

Table 21 : **Programs/Activities to alleviate the Socio-Economic Situation of the Disadvantaged Population, 2015**

Program	Services Extended	No. of Client Served
PROGRAMS AND SERVICES FOR CHILDREN	➤ Day care Services No. of ECCD Centers No. of ECCD Children No. of ECCD Teachers	190 9,248 183
	➤ Educational Assistance Values formation for SUWCP for parents: Children: Tuloy Aral Walang Sagabal (Children with disabilities)	214 160 49
	➤ Children in Need of Special Protection	329
	➤ Centers and Institutions ➤ Home Care for Girls (Social Development Center)	
REACH OUT OPERATION		

	Physically Abused	6
	Sexually Abused	35
	Dependents	83
	Children in conflict with the Law (CICL)	11
	➤ Boy's Town of CDO	41
	➤ Tahanan Ng Kabataan	31
	With cases	19
	Without cases	22
	➤ Residential Care for the Elderly and Differently Abled	28
	Elderly	11
	Differently Abled	17
PROGRAMS AND SERVICES FOR THE YOUTH	➤ Pag-asa Youth Association of the Philippines-CDO Chapter	
	PYAP Chapter	32
	PYAP Members	893
PROGRAMS AND SERVICES FOR WOMEN	➤ Women's Organization Kalipunan ng Liping Pilipina (KALIPi) Members	2,895
	VAWC Cases Facilitated	92
	Solo Parents provided IDs	574
	Assistance to families in crisis situation	210
	Seminars on RA 9262	65
	Seminars on Parent Effectiveness & Responsible Parenthood	1,600
	Pre-Marriage Counseling	2,031
	Gender and Development Seminar	105
	Seminar on RA 7610	35
	Magna Carta on Women – RA 7192	47
PROGRAMS AND SERVICES FOR PERSONS WITH DISABILITIES	➤ PWD Registered Population	1,716
	PWD Groups/Associations	19
	PWD Provided IDs	621
	PWD Provided with Booklet for Medicines	598
	PWD Provided with Booklet for Grocery	598
	STARKEY Hearing Aid Mission: Screened Patients	1,694
PROGRAMS AND SERVICES FOR ELDERLY	➤ Senior Citizen Chapter Associations	124
	Senior Citizen Members	30,444
	Social Pensioners	1,366
	Senior Citizen Provided with IDs	30,444
PROGRAMS AND SERVICES FOR INDIGENOUS PEOPLE	➤ Search for Most Outstanding IP Leaders, Team Building of IP Youth and Poster Making for IP Children	6 winners
	Educational Assistance for IPs	200
	DSWD Cash for IPs	430
	PANAHUD Ritual	72
	PAMUMULAKAW Ritual	32

DISASTER VICTIMS & ASSISTANCE TO INDIVIDUALS IN CRISIS SITUATION	➤ Relief Services for Disaster Victims	484 fam.
	➤ Food Assistance (Regular)	415
	➤ Social Case Study for DSWD Assistance	2,817
	➤ Transportation Assistance to RTMI	23
SPECIALPROJECT EYE CARE & SURGI CARE	➤ Eye Care Operations	240
	Surgical Operations	264
	Screened Patients	10,545
	Cleft/Palate Operation	68
	Operation Tuli	88
LIVELIHOOD PROGRAM	➤ Release of SLP Fund (Seed Capital) – DSWD Track 1	777
	Release of SLP Fund (Seed Capital) - CSWD	173
	Bottoms Up Budget (Technology Vocational Skills Training for PWD)	152
	Barrio Fiesta Camp Evangelista	10
	Fiesta Agro Fare	21
	Pasko de Oro Christmas Bazaar:	17
		Exhibitors/ 62 families
	BUB: Packaging & Labelling/Food Safety Training	27
	Women's Month Celebration Bazaar	24
	Referred for TESDA Scholarship	272
OTHERS	➤ HIMUGSO: Palarong Pambansa para sa Bata	100
	➤ DOT: A Day of Special Treat to Street Children	100
	➤ DPWH: Christmas Treat for Children	200
	➤ Oro-Integrated Cooperative Gift Giving	70
	➤ VIP Hotel Anniversary: MDG FACES	40 families
	➤ Urban Household Vegetable Container Gardening Phase 2	42 households

Source : *City Social Welfare and Development*

Table 22 : **Social Facilities in Cagayan de Oro City, 2015**

Facilities	Services Offered
<u>Center-Based</u>	
Boys Town of Cagayan de Oro	Residential care, medical services and educational services
Balay sa Gugma	Residential care, vocational training and livelihood program values and spiritual formation and information

Balay Canossa Foundation, Incorporated	Residential care, educational assistance, psycho-social intervention, vocational training and livelihood program, values and spiritual information
Mother Theresa Foundation, Incorporated	Residential care, formal education, health services, peer group counseling and custodial services
Tahanan Ng Kabataan <ul style="list-style-type: none"> • Youth Offender • Delinquent youth 	Residential care, medical services, dental services, legal, custodial, peer group counseling and non-formal education.
Social Development Center	Residential care, medical services, legal, custodial, peer group counseling.
<u>Community-Based</u>	
Balay Canossa Foundation, Inc.	

Source : *City Social Welfare and Development*

Housing and Resettlement

Table 23 : **Approved Complex Subdivisions, 2009-2015**

Barangay	Name of Subdivision or Condominium	Classification	Area (in has.)	No. of Lots/ Units
Agusan	▪ Teakwood Hills Subd. Phase 11	High End	52,675	120
Balubal	▪ Greenfield Homeowners Ass'n.	Economic	36,519	360
	▪ Medalla Milagrosa P-1 HOA, Inc.	Economic	20,000	177
	▪ Balubal Relocation Site	Economic		567
Balulang	▪ Xavier Estates Phase 5	High End	220,709	411
	▪ Saint Therese	Socialized	16,720	264
Balulang (upper)	▪ Xavier Estates Phase 4-E	High End	36,505	49
	▪ Xavier Estates Phase 5-A	Economic	90,957	272
	▪ Xavier estates Uptown Condotel	Residential/ Condo	1,912	48
	▪ Montierra Subdivision	Economic		592
Barangay 24	▪ Avida Centrio Tower	Residential/ Condo	3,936	522
Barangay 30	▪ Avida Towers Aspira	Residential/ Condo	7,564	R. 636 C 12
Bulua	▪ AMAIA SCAPES	Economic	112,009	693
Camaman-an	▪ NHA-CDO (Bayanihan Village1)	Economic	47,307	439
	▪ NHA-CDO (Bayanihan Village1A)	Economic	15,210	188
	▪ Consolacion Homeowners Ass'n	Economic	14,126	108

Barangay	Name of Subdivision or Condominium	Classification	Area (in has.)	No. of Lots/ Units
Canitoan (Calaanan)	▪ Cagayan de Oro Resettlement and Socialized Housing Proj. Phase 1 & 11	Socialized	33,038	1,464
	▪ Golf Estate Cluster 4	Economic		
	▪ Village of the Holy Infant Jesus Subdivision	Economic		145
	▪ Virgen del Rosario Homeowners Association, Inc.	Economic		119
Carmen	▪ Westwoods village	High End	136,542	407
	▪ NHA-City Urban Homeowners Association, Inc.	Economic		266
	▪ Victor's Subdivision	Economic		394
Carmen(upper)	▪ Golden Glow North 2	High End	15,780	69
	▪ Forest View Homes Phase 3	High End	59,568	332
	▪ Primavera Residences Condo Tower A	Residential/ Condo	1,125	R 116 C 17
	▪ Granvia Residences	Residential/ Condo	944	R 69 C 4
	▪ Infinite Forest (IF) Koresco condo 2	Residential/ Condo	748	8
	▪ Primavera Residences Condo Tower B	Residential/ Condo	1,126	R 56 C 9
	Pueblo de Oro: ▪ KORESCO Condominium	Residential/ Condo	861	11
	▪ The Courtyards	Residential/ Condo	11,688.57	68
	▪ The Courtyards, Phase 2	Residential/ Condo	10,500	75
	▪ Granvia Suites	Residential/ Condo	778	R 82 C 5
Indahag	▪ Alegria Hills Phase 2	High End	138,790	116
	▪ Bermundo Village HOA	Economic	16,754	145
	▪ Mergeville HOA	Economic	36,315	293
	▪ Bellavita Cagayan de Oro	Economic	-	1,600
	▪ Blessed Ville Homeowners Association, Inc.	Economic	-	126
Iponan	▪ Bloomingdale Subd. Phase 4	Economic	19,079	60
	▪ Cambridge Subdivision	Economic/ Socialized	55,000	383
	▪ Bloomingdale Subd. Phase 5	High End	14,777	25
Lumbia	▪ Happy Ville Homeowners Association, Incorporated	Socialized	58,456	292
	▪ Bloomfields Cagayan de Oro	High End	59,627	144
	▪ Linea	Economic	27,411	381
	▪ La Miranda Crest	High End	86,265	381
	▪ Lessandra Heights	Economic	65,158	690
	▪ Sunrise Bliss Subdivision	Economic/ Socialized	12,252	85
	▪ Carmen Ville Subdivision	Economic/ Socialized	67,579	701

Barangay	Name of Subdivision or Condominium	Classification	Area (in has.)	No. of Lots/ Units
	<ul style="list-style-type: none"> ▪ NHA-Lumbia Heights ▪ Lumbia Height Subdivision ▪ Noah's Ark HOA, Inc. ▪ Highland Ville HOA, Inc. ▪ Midalla Milagrosa-P1 HOA, Inc. ▪ Villeview HOA, Inc. ▪ Muslim-Christian Women HOA 	<ul style="list-style-type: none"> Economic Economic/ Socialized Economic Economic Economic Economic Economic 	<ul style="list-style-type: none"> - 58,279.82 17,200 40,984 20,000 58,324 24,535 	<ul style="list-style-type: none"> 1,325 367 92 264 158 420 223
Kauswagan (RER subd.)	▪ AVSM Condominium	Residential/ Condo	240	6
Macasandig	▪ Vista del Rio Subdivision	High End	57,647	220
Mambuaya	▪ NHA-Village1	Economic	76,583	1,004
Pagatpat	▪ Pagatpat Relocation Site	Economic	-	1,742
Puerto Upper	▪ JMA Subdivision	Economic	-	261
Tablon	▪ Monte Ceilo Heights	High End	148,174	736

Source: City Planning & Development Office

Table 24 : **Socialized Housing Program, City Government, 2015**

Name of Project	Location	Area in Hectares	Estimated No. of Lots Generated
Cagayan de Oro Resettlement & Socialized Housing Project 1	Calaanan, Canitoan	63.460	3,346
Cagayan de Oro Resettlement & Socialized Housing Project 1i	Calaanan, Canitoan	33.038	1,464
Cagayan de Oro Resettlement & Socialized Housing Project 2	Consolacion	0.8859	111
Cagayan de Oro Resettlement & Socialized Housing Project 3	Iponan	2.295	263
Cagayan de Oro Resettlement & Socialized Housing Project 4	Balubal	15.9745	1,020
P.P. Socialized Housing Project	Puntod	1.176	118
Acacia Ext. Zone 7 Carmen Socialized Housing Project (AEHA-ZONACAR)	Carmen	2.7297	298
Balulang Socialized Housing Project (MCUPA)	Balulang	2.352	243
Kauswagan Socialized Housing Project (KAHOA)	Kauswagan	1.0066	116
ISLACUPA Consolacion Socialized Housing Project	Consolacion	1.3624	186
Bugo Zone 4 Socialized Housing Project	Bugo	1.6392	122
Buena Oro Socialized Housing Project (BOHA)	Macasandig	2.989	198
Cawilhan Village Socialized Housing Project	Cugman	1.247	101
Macanhan Relocation Project Phase 1,2,3 & 4	Carmen	28.9	796
Paglaum Socialized Housing Project	Camaman-an	1.117	103

Balangay Pangandoy Socialized Housing Project	Macasandig	3.4409	240
Lapasan Socialized Housing Project (Veterans Lot)	Lapasan	.1658	20
Zone 9 Carmen Socialized Housing Project (AENA)	Carmen	5	62
Zone 1 Punta Bonbon Socialized Housing Project (Paradise)	Zone 1, Bonbon	2.9222	222
Centennial Village Socialized Housing Project	Mambuaya	1.5	111
Tibasak Macasandig Socialized Housing Project	Tibasak, Macasandig	2.3688	244
Balulang	Balulang	.2511	40
Balacanas Consolacion Socialized Housing Project (CD Corporation) ⁰	Consolacion	.2934	to be surveyed
Upper Macanhan Socialized Housing Project (URUMAI) ⁰	Macanhan, Carmen	.2932	48
Balongis Balulang Social-ized Housing Project 2 (PAMANA)	Balongis, Carmen	-	to be surveyed
Saint Therese	Lumbia	16.720	264
Happy Ville Home Owners Assoc.	Calaanan, Canitoan	58.456	292
Public Land:			
Accretion Macabalan Slum Upgrading Project	Macabalan	3.039	375
Upper Kolambog Lapasan Slum Upgrading Project	Lapasan		
BICUPHAI Slum Upgrading Project	Puntod/Lapasan Barangay 22	.5172	75
	Puntod	1.543	348
Malinawon Slum Upgrading Project	Puntod	.4401	78
St. John Slum Upgrading Project		.5170	77
Proposed:			
Indahag*	Indahag	11.8972	640
Calaanan, Canitoan*	Calaanan, Canitoan	3.1016	217
Total		268.0389 has.	11,838

Source : Estate Management Division-CPDO Legend: ⁰ To be surveyed : * Land Banking Program

Public Order and Safety

The total strength of Cagayan de Oro City Police Command is 1,015 personnel (excluding 48 NUPs). This shows an average ratio of 1 policeman for every 666 population for 2015. The department is equipped with Twelve (12) Government Issued Vehicles and (32) motorcycles to enhance mobility. Table below shows Crime Incidence by Type, and by Sex of Offender.

Table 25 : **Crime Rate By Type of Crimes, 2015**

Type	Number	Rate
Crime Volume	10,891	
Total Index Crimes	4,686	44.32%
Total Non-Index Crimes	5,885	55.67%
Total Crime Volume	10,571	100%
Crime Solved	1739	-
Crime Cleared	1999	-

Source : *Cagayan de Oro City Police Office (COCPO)*

The City Fire Department's fire fighting force consists of 155 men with a ratio of one fireman for every 4,435 population. The Department is equipped with 19 fire trucks. It covers eight (8) Fire Stations located at Capt. Vicente Roa Street near cogon Market (main), Lapasan, Carmen, Nazareth, Macabalan, Kauswagan, Bulua and Puerto. While Five (5) Sub-Stations are located at Barangays 7, Balulang, Macasandig, Bugo and Tablon.

Table 26 : **Recorded Fire Incidents, 2015**

Nature of Fire	Number
Structural	141
Vehicular	18
Grass Fire	167
Others	0

Source : *Bureau of Fire Protection*

Below are Cagayan de Oro City Volunteer Fire Brigades with Fire Trucks:

- Graphics Volunteer Fire Brigade
- Limketkai Volunteer Fire Brigade
- Gaisano Volunteer Fire Brigade
- CDO Chinese Volunteer Fire Brigade
- Del Monte Philippines Inc. Volunteer Fire Brigade
- CEPALCO Volunteer Fire Brigade
- MITIMCO Volunteer Fire Brigade
- CATIMCO Volunteer Fire Brigade